



## COME LEGGERE UNA CARTA TOPOGRAFICA

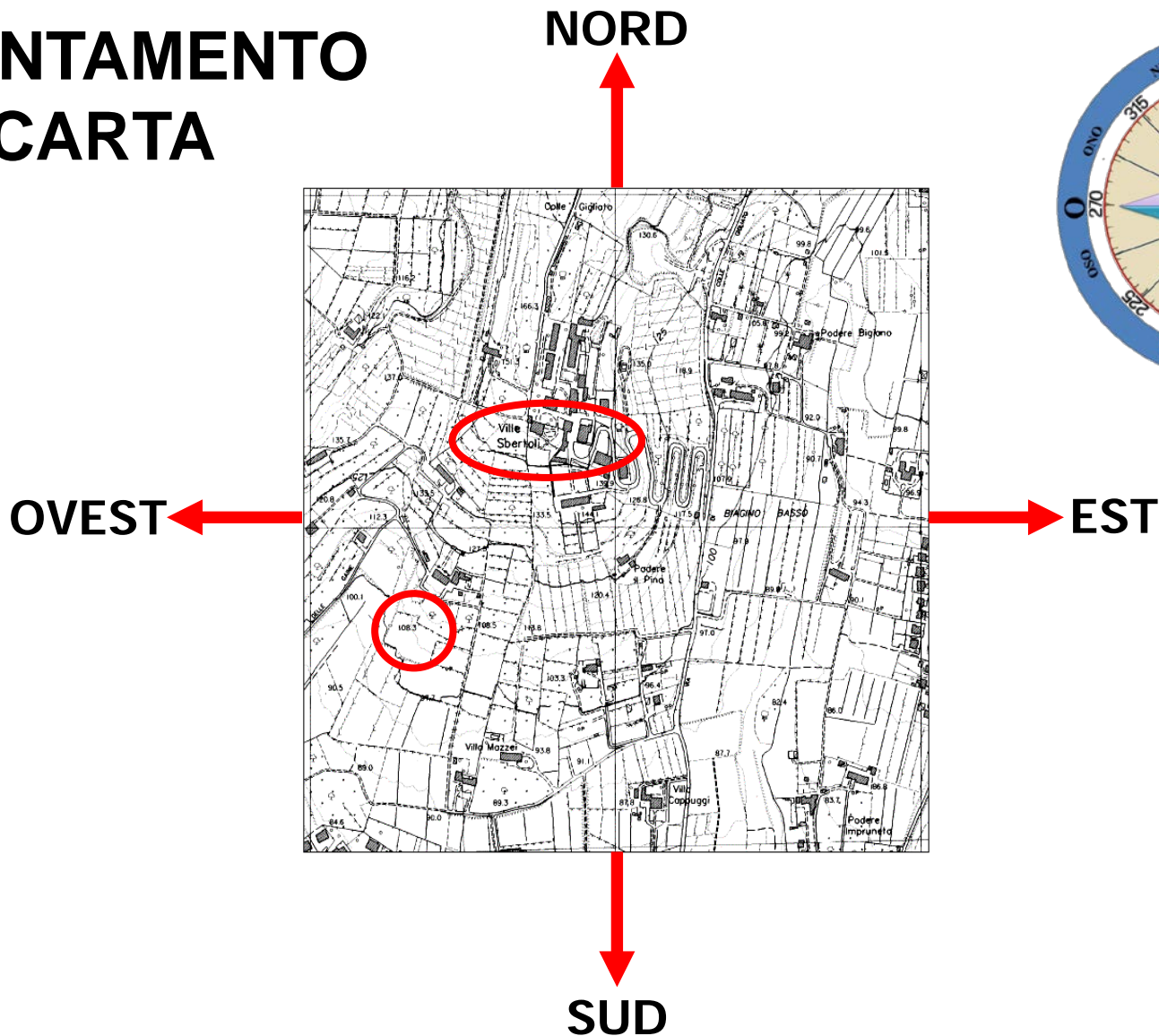
Prima di apprendere la lettura della COAIB iniziamo con alcuni **concetti base**:

- **ORIENTARE LA CARTA**
- **LA SCALA TOPOGRAFICA**
- **LE CURVE DI LIVELLO**
- **LE COORDINATE**



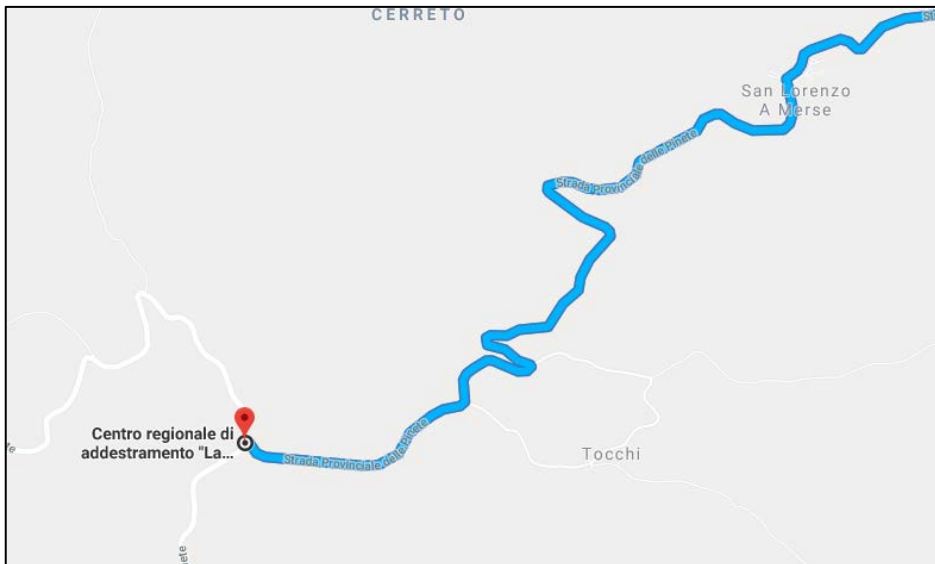
# CARTOGRAFIA OPERATIVA AIB

## ORIENTAMENTO CARTA



# CARTOGRAFIA OPERATIVA AIB

## ORIENTAMENTO CARTA



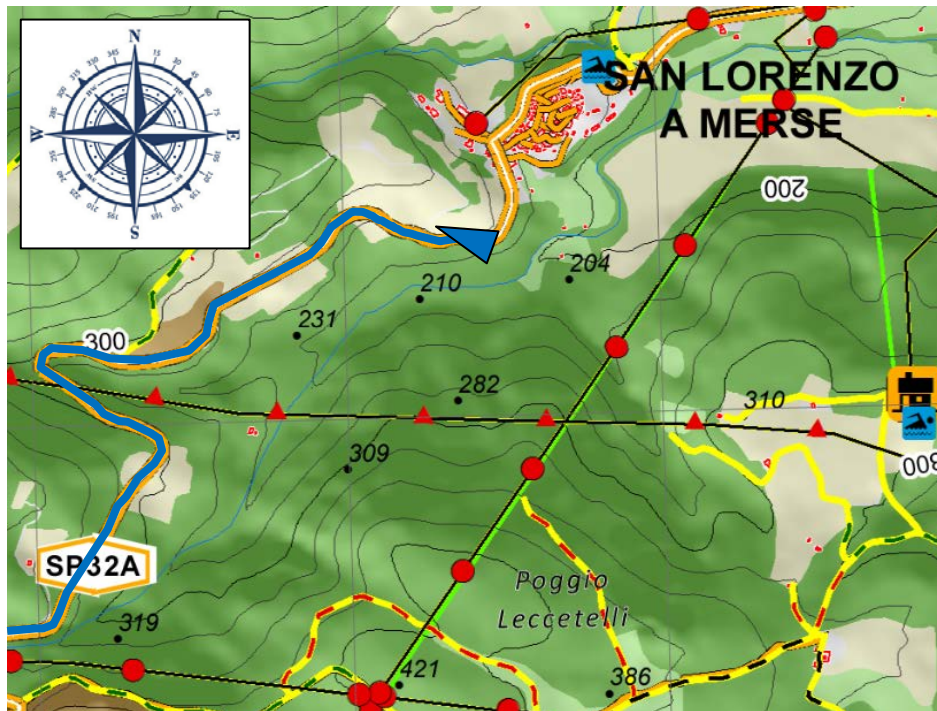
## ORIENTAMENTO A NORD

## ORIENTAMENTO IN DIREZIONE DI MARCIA



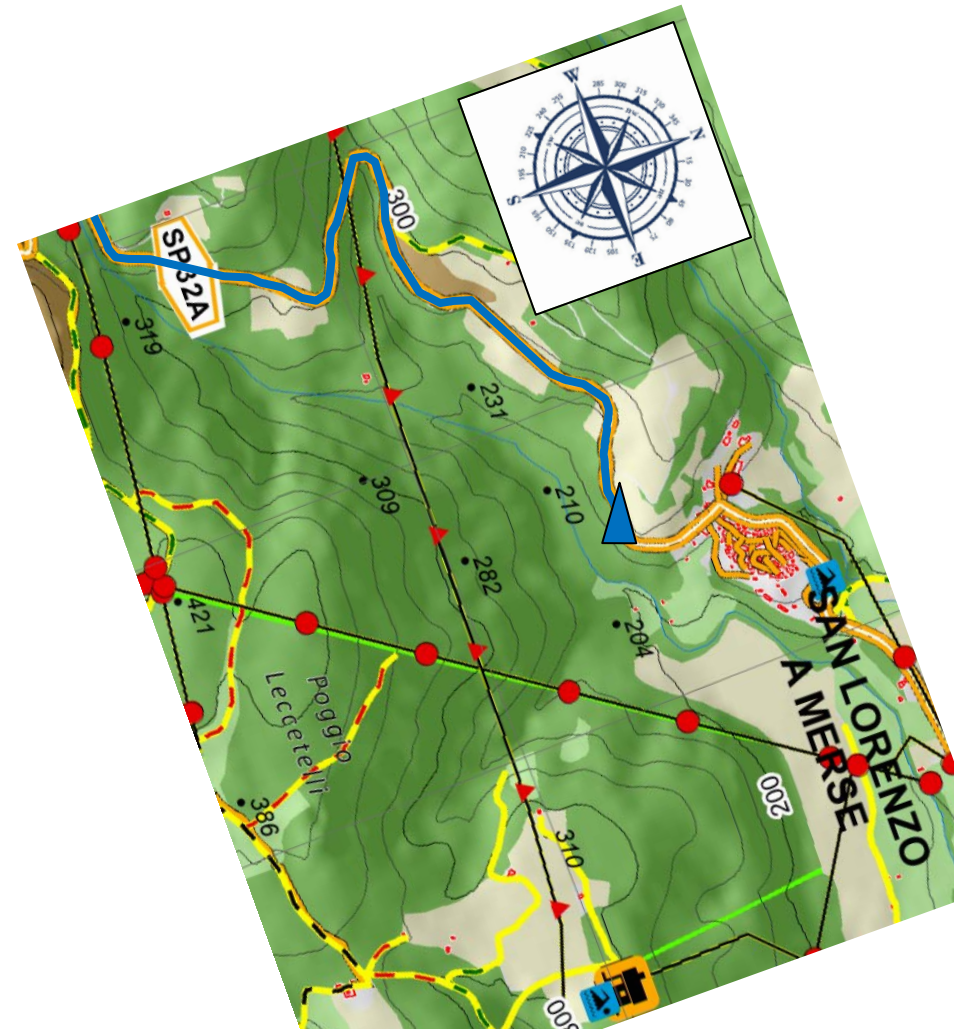
# CARTOGRAFIA OPERATIVA AIB

## ORIENTAMENTO CARTA



## ORIENTAMENTO A NORD

## ORIENTAMENTO IN DIREZIONE DI MARCIA

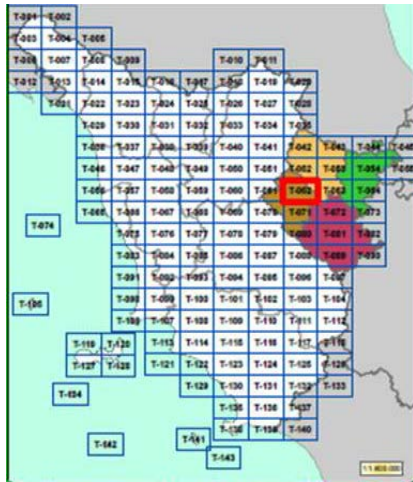


# CARTOGRAFIA OPERATIVA AIB

## SCALA

## scala 1 : N

# 1 : 25.000



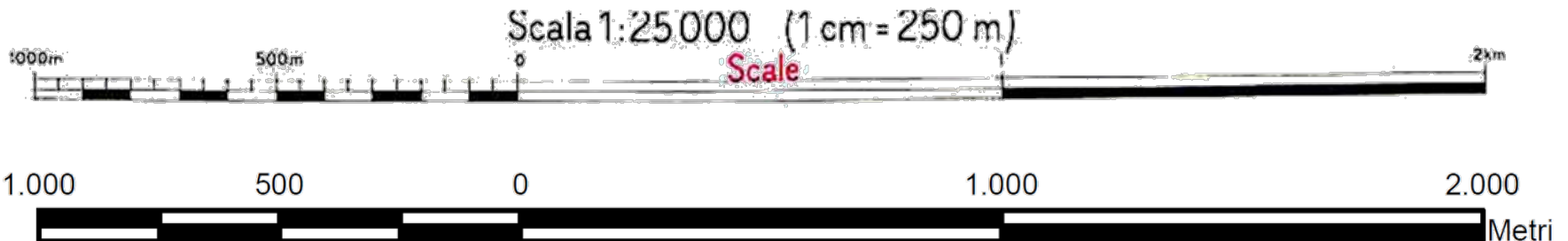
**143 CARTE**

1 cm  
*sulla carta*

=

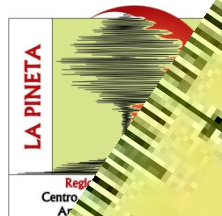
25.000 cm  
*nella realtà*

cioè 250 metri



## SCALA 1:25.000

# CARTOGRAFIA OPERATIVA AIB

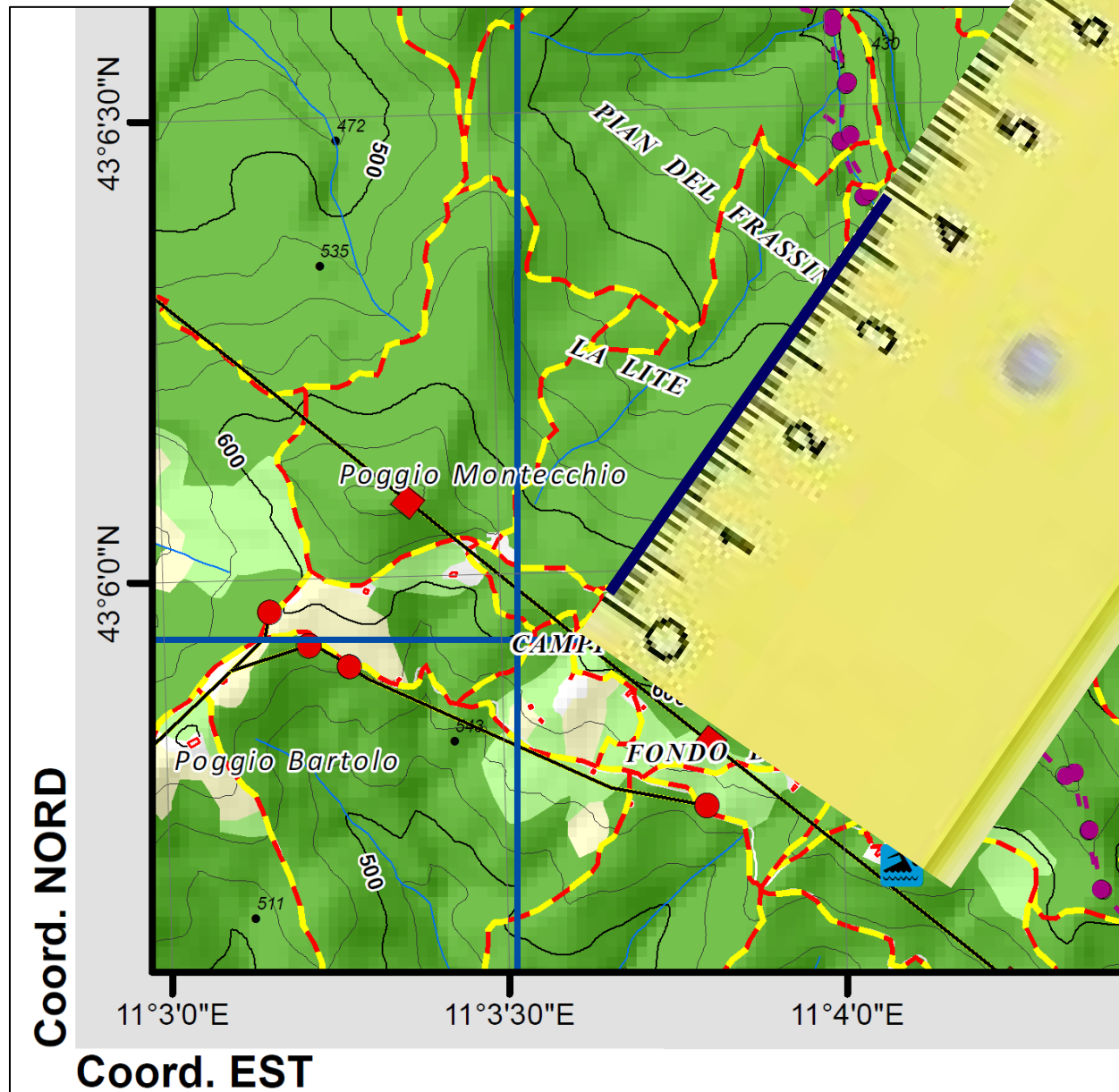


**SCALA**

**Misuriamo 4 cm**

**quindi**

**Sono 1.000m**



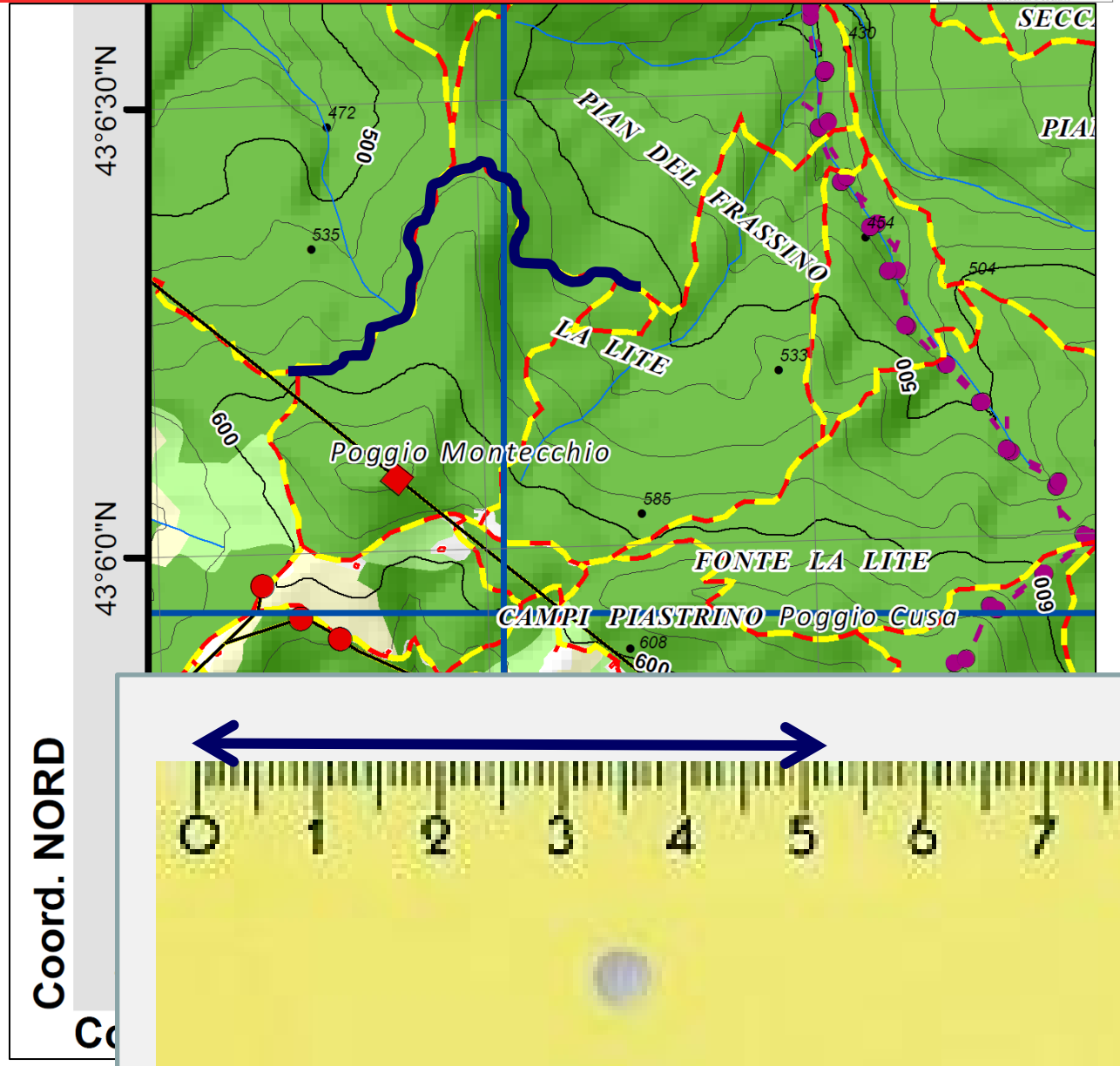
# CARTOGRAFIA OPERATIVA AIB

**SCALA**

**Disteso il filo  
misura 5,22 cm**

**Quindi x 250**

**=1,305 m  
(circa!)**

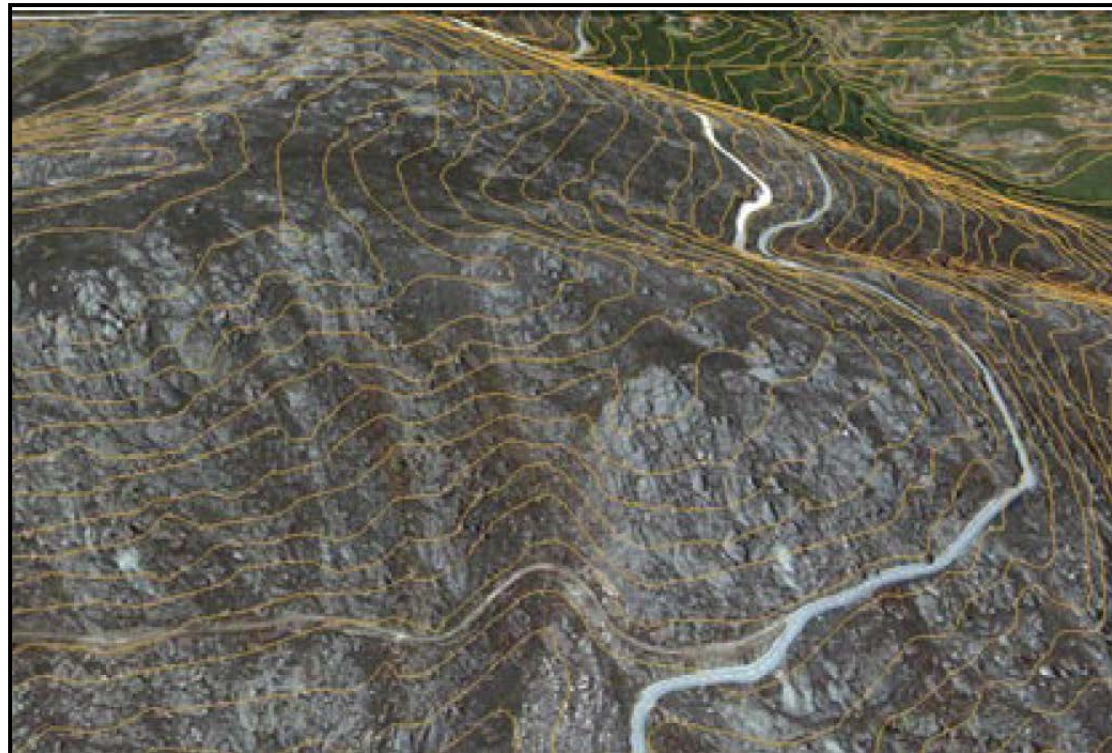




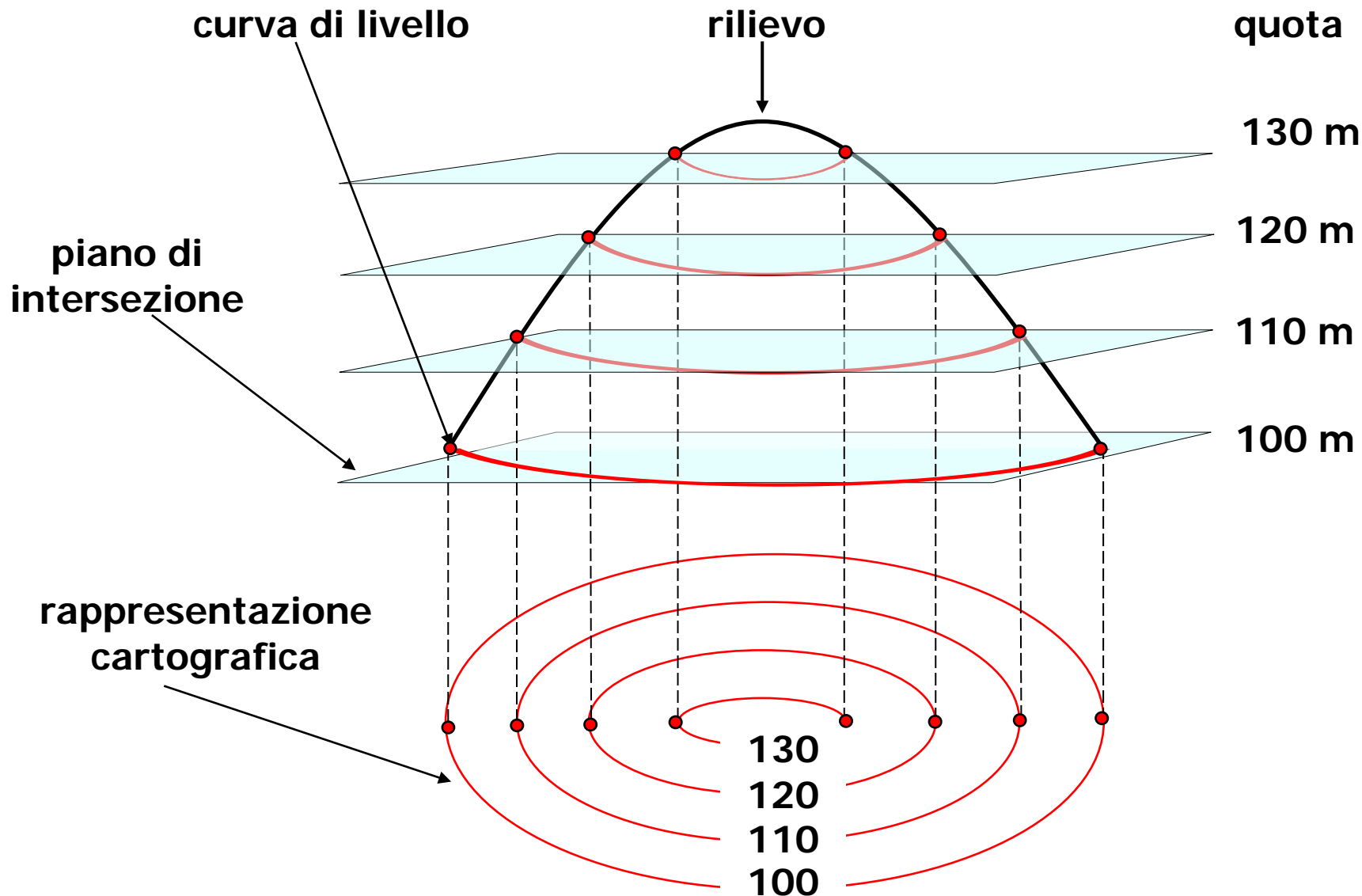
## CURVE DI LIVELLO

Sono **linee** che congiungono tutti i punti posti alla stessa quota. *ISOIPSE*

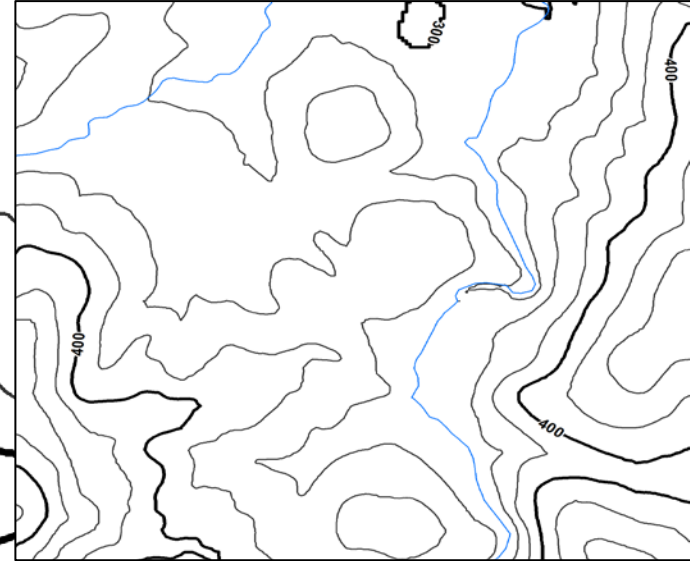
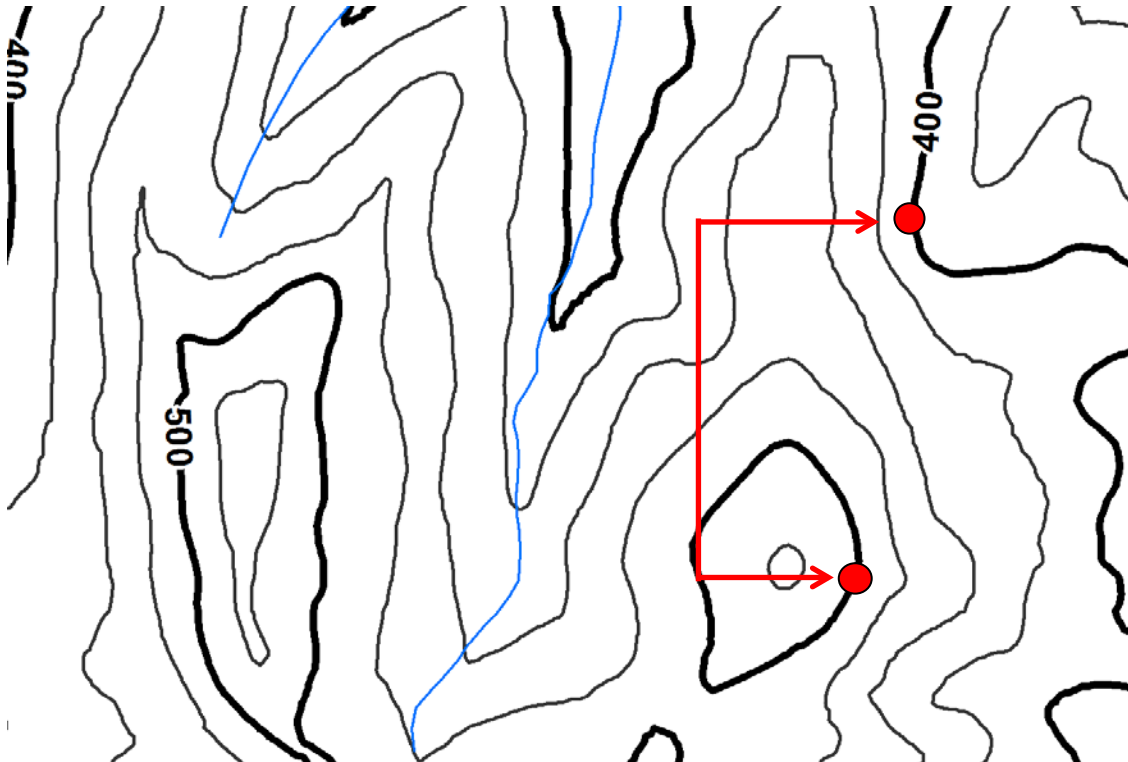
Danno una  
interpretazione  
morfologia territorio



# CARTOGRAFIA OPERATIVA AIB



# CARTOGRAFIA OPERATIVA AIB

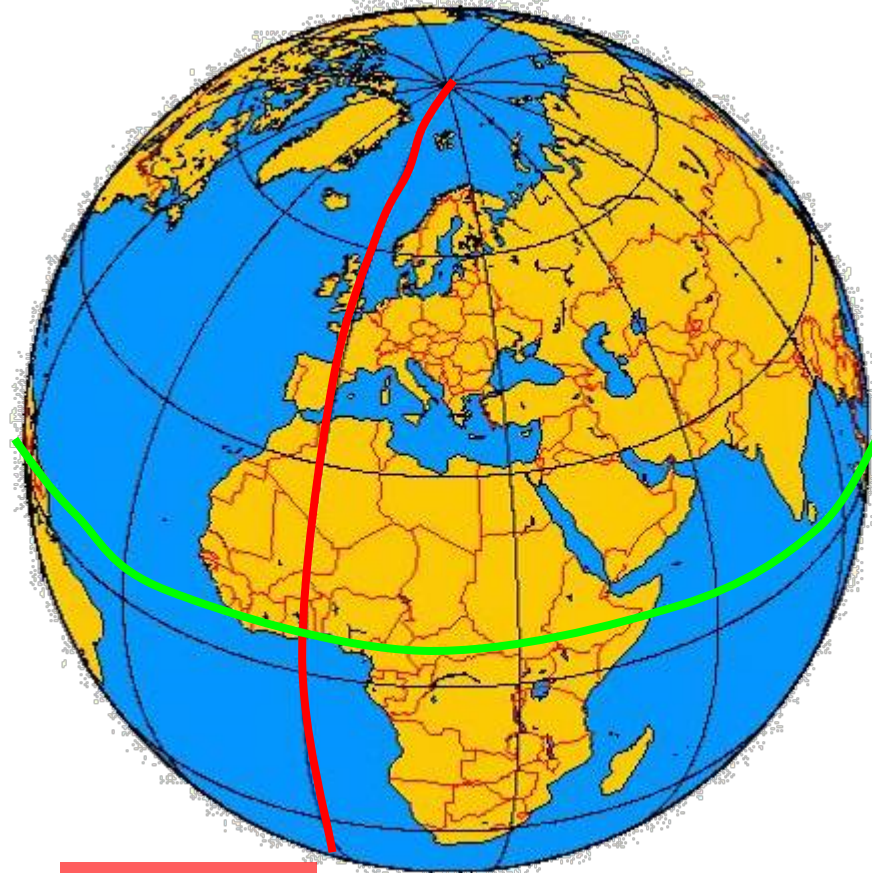


**N. 4 CURVE = DISLIVELLO 100 m**  
**Equidistanza 25m**

# CARTOGRAFIA OPERATIVA AIB

## COORDINATE

- **Chilometriche**
- **Geografiche**



Meridiano di  
Greenwich 0°

Equatore 0°

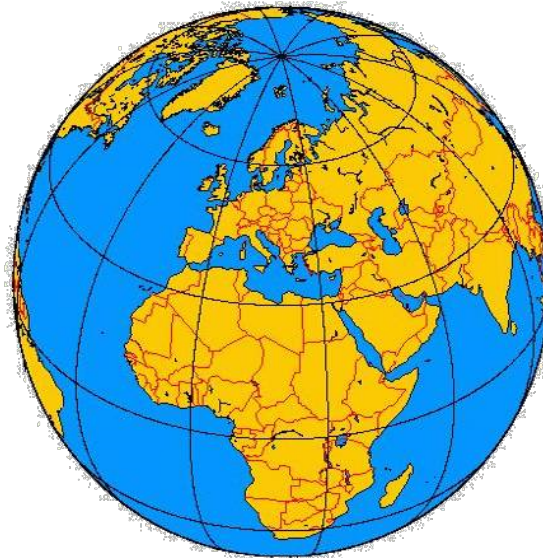
## COORDINATE GEOGRAFICHE

**Latitudine (N):  $+43^{\circ} 08' 01,38''$**

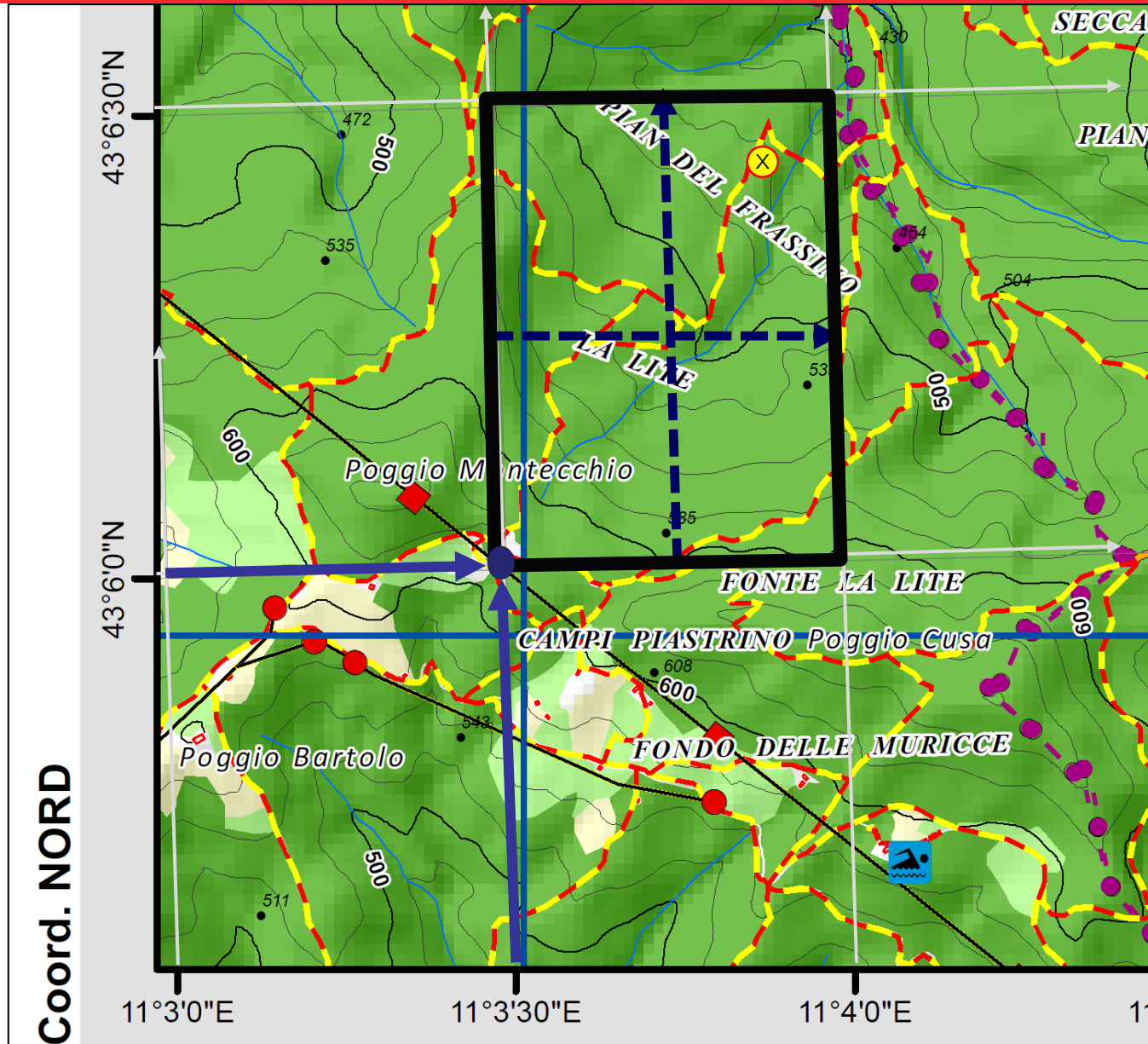
*43 gradi, 08 minuti primi, 01 minuti secondi e 38 centesimi*

**Longitudine (E):  $+11^{\circ} 14' 33,56''$**

*11 gradi, 14 minuti primi, 33 minuti secondi e 56 centesimi*



# CARTOGRAFIA OPERATIVA AIB



# CARTOGRAFIA OPERATIVA AIB

## POSIZIONE GPS:



+ 43° 08' 01" Nord  
+ 11° 14' 33" Est

Google Maps

[link](#)

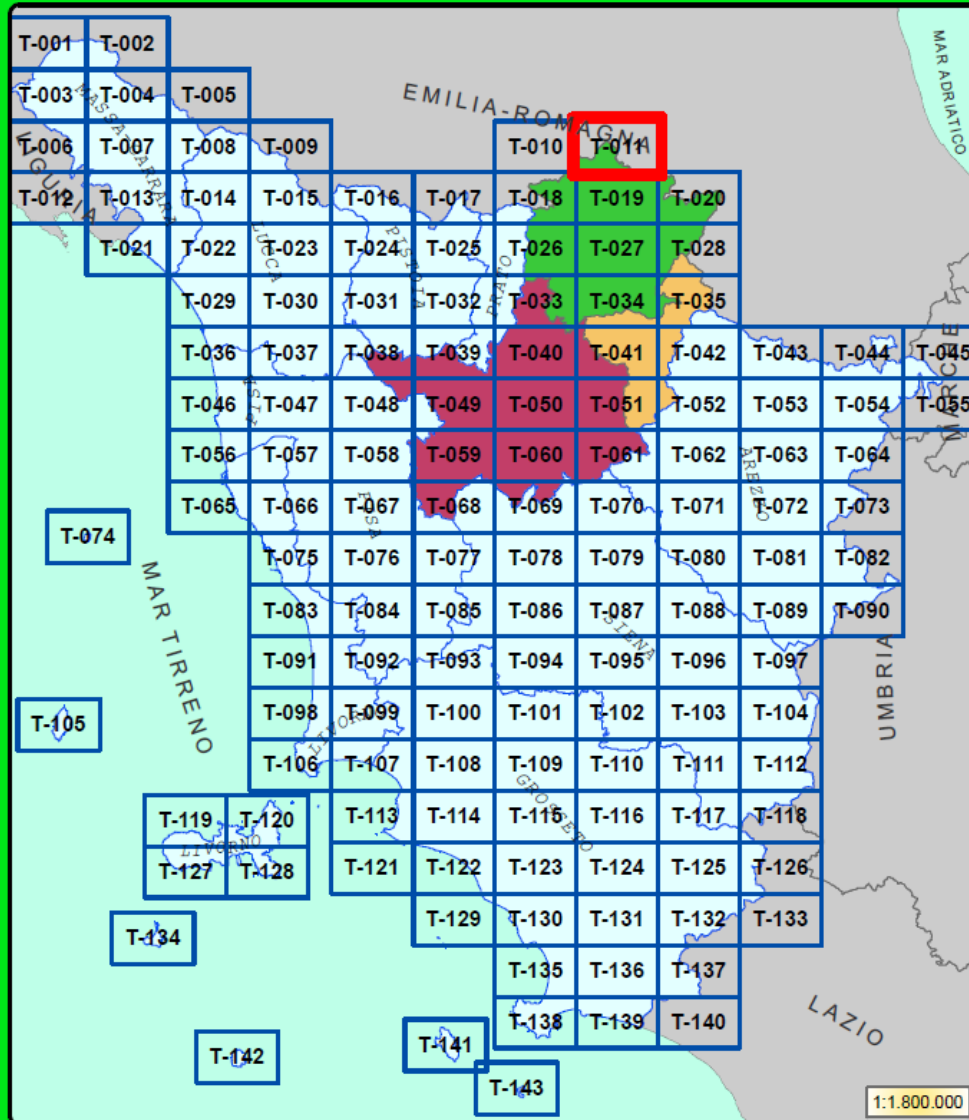


GPS Status

[link](#)

# CARTOGRAFIA OPERATIVA AIB

## OTTIMIZZAZIONE REGIONALE

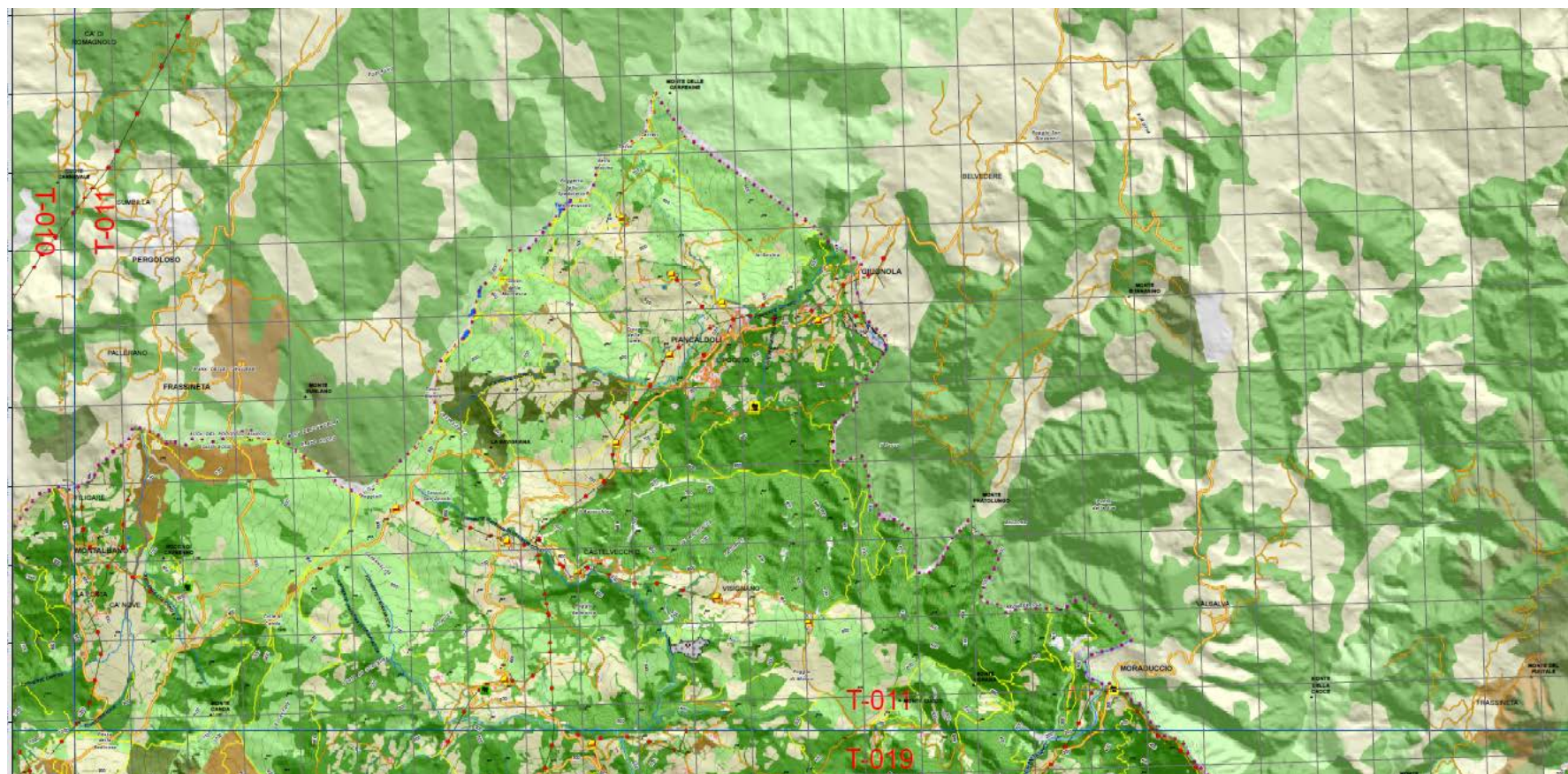


143 CARTE

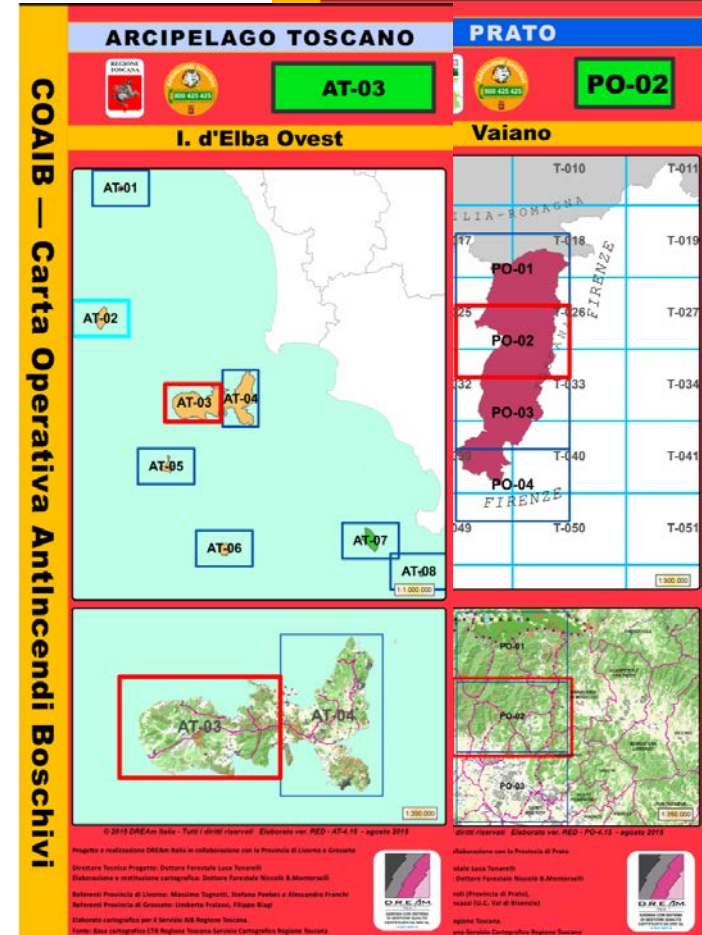
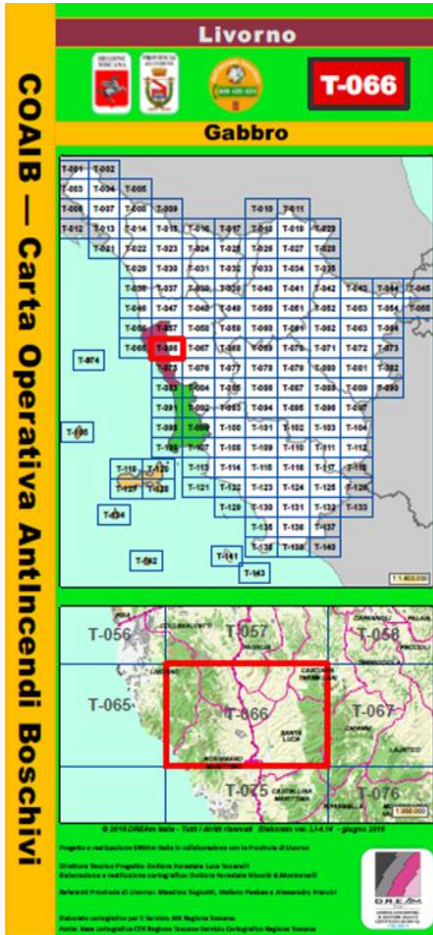
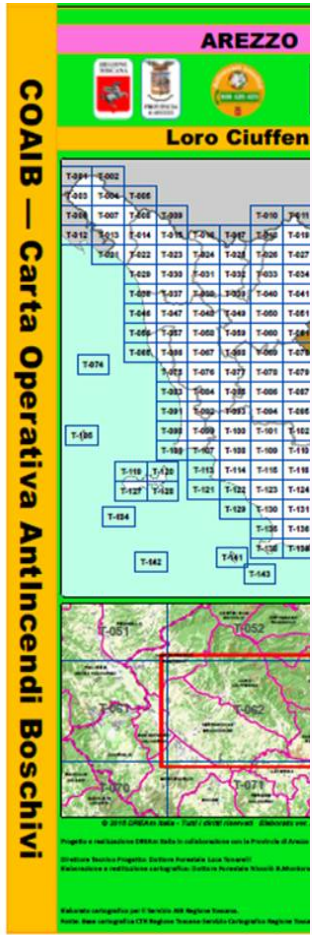


# CARTOGRAFIA OPERATIVA AIB

## CONTINUITA' VEGETAZIONALE CON REGIONI CONFINANTI



# CARTOGRAFIA OPERATIVA AIB



**GREEN MAP**

**RED MAP**

# CARTOGRAFIA OPERATIVA AIB



**QUADRO CARTOGRAFICO**

**PROTOCOLLO LACES**

**DIAGRAMMA DI CAMPBELL**

**SCALA DI BEAUFORT**

**ALFABETO ICAO**

**NUMERO CARTA**

**NOME CARTA**

**PROTOCOLLO L.A.C.E.S.**

**The Campbell Prediction System**

**SCALA BEAUFORT**

**COAIB - Carta Operativa Antincendi Boschivi**

**Monticiano**

**T-094**

**SIENA**

**SIENA**

**T-094**

**COAIB - Carta Operativa Antincendi Boschivi**

**Monticiano**

**LAZIO**

**LEGENDA**

**QUADRO UNIONE**

**QUADRO GUIDA**

# CARTOGRAFIA OPERATIVA AIB



## LEGENDA GENERALE








VIABILITÀ	LINEE ELETTRICHE	IDROGRAFIA	USO DEL SUOLO	
Ferrovia	Elettrodotto AT	Fiume/torrente	Agricolo	Area campeggio Villagg. Turistico
Autostrada/Superstrada	Elettrodotto MT	Rio/fosso	Pascoli/incolti/Veg. Rada/Cesse	Area Sportiva
Str. Regionale/Provinciale	Elettrodotto RFI	Lago/Laghetto	Bosco Latifoglie	Area Industriale
Rete stradale Comunale	<b>EDIFICI, STRUTTURE</b>		Bosco Misto (latifoglie/conifere)	Discarica
Strad. For. AIB CL 1	Case/Edifici	Ospedale	<b>CONFINI</b>	
Strad. For. AIB CL 2	Aree Sportive	Centro Add. «LA PINETA»	Comune	Discarica
Strad. For. AIB CL 3		Provincia	Bosco Conifere	Cava
		Regione		

VIABILITÀ	LINEE ELETTRICHE	IDROGRAFIA	USO DEL SUOLO	
Tratto in Galleria	Elettrodotto AT	Fiume/torrente	Agricolo	Area turistico/sportivo
Autostrada/Superstrada	Elettrodotto MT	Rio/fosso	Pascoli/incolti/Veg. Rada/Cesse	Area Industriale
Str. Regionale/Provinciale	Elettrodotto RFI	Lago/Laghetto	Bosco Latifoglie	Discarica
Rete stradale Comunale	<b>EDIFICI, STRUTTURE</b>		Bosco Misto (latifoglie/conifere)	Cava
Strada For. AIB CL 1	Case/Edifici	Aree Sportive	<b>CONFINI</b>	
Strada For. AIB CL 2		Comune	Bosco Conifere	
Strada For. AIB CL 3		Provincia		
Strada For. Non Classificata		Regione		
Ferrovia				


























Legenda Generale

# CARTOGRAFIA OPERATIVA AIB

## LEGENDA OPERATIVA

Punti Acqua	Opere AIB	Basi Operative		
 Accesso Automezzi + Elicotteri	 Elisuperficie	 Ente Regione Toscana	 Vigili del Fuoco	
 Accesso Solo Elicotteri	 Ripetitore Radio AIB	 Volontariato	 Corpo Forestale dello Stato	
 Accesso Solo Automezzi	 Torretta AIB	<b>Punti Critici</b>		
 Idrante	 Punto Fisso Avvistamento AIB	 Rifornitore (B,D,GPL,M)	 Discarica	 Campeggio
 Piscina	 Viale Parafuoco	 Barriera (Cancello / Sbarra / Catena)	 Industria	 Alloggio Turistico Residence
		 Cava	 Agriturismo	

*n = N° punti aggregati vicini 250m*

Legenda Operativa	Punti Acqua	Opere AIB	Basi Operative			
	 Invasi AIB - RT	 Elisuperficie	 Ente Regione Toscana	 Vigili del Fuoco		
	 Invasi	 Ripetitore Radio AIB	 Volontariato	 Corpo Forestale dello Stato		
	 Idrante	 Torretta AIB - RT	<b>Punti Sensibili</b>			
	 Piscina	 Torretta AIB "LA RACCHETTA"	 Barriera (Cancello / Sbarra / Catena)	 <b>Protezione Civile Rischio</b>		
	 Viale Parafuoco	 Industria	 Industria rischio alto	<b>Struttura Ricettiva</b>		
		 Cava	 Discarica	 basso	 medio	 alto
				<b>Campeggio</b>		
				 basso	 medio	 alto

*n = N° punti aggregati vicini 250m*